

SOUTHERN ILLINOIS UNIVERSITY
EDWARDSVILLE



WELCOME TO

SOUTHERN ILLINOIS UNIVERSITY EDWARDSVILLE



You belong here.

We believe diversity on campus benefits all students. SIUE nurtures an inclusive campus where all students are valued, **have a voice** and feel connected to the community.



On the Cover:



You'll begin your SIUE journey here. Each fall, we take a first-year student class photo at the **Cougar statue**. 📸

SIUE offers an **energetic and diverse** environment where you can explore your interests and be part of something **new and exciting**. 🥰

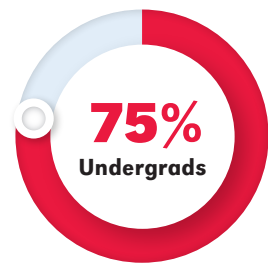
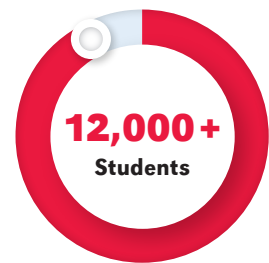


Wondering what SIUE is all about? **Look inside for a glimpse into life as an SIUE student!**

- 4—Explore campus and the surrounding community
- 8—Find your major
- 12—Get out there and learn!
- 26—Live where you learn
- 32—Take the next steps

A few things we think you should know...

Our Students



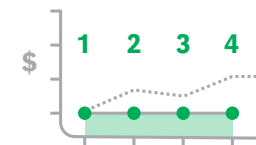
- White: 60.5%
 - Black: 12.5%
 - International: 7.2%
 - Not Disclosed: 7%
 - Hispanic/Latinx: 5.8%
 - Multiple Races: 3.3%
 - Asian: 2.7%
 - Native American/Alaskan Native: .2%
 - Hawaiian/Pacific Islander: .1%
- Based on student reporting, 2023-24 student body

Students come from



Access and Opportunity

More than
15%
of students take classes
fully online



New undergrads pay a **guaranteed tuition rate** for 4 continuous academic years



Closing Equity Gaps

More than
30%
SIUE undergraduates
are Pell eligible

Nearly
50%
Recent graduating class
No student loan debt

We think it's important to
make **social mobility** possible
for **everyone**.

HIGHER EDUCATION
EXCELLENCE IN
DIVERSITY



INSIGHT into Diversity, 2023

Our "outstanding commitment
to diversity and inclusion"
has been recognized for
10 consecutive years!

BEST BANG
FOR THE



Washington Monthly, 2023

"Best bang for the buck"
means SIUE is a
smart choice for your money.



Academics

Areas of study

350+

Student-to-faculty ratio

14 : 1

Average class size

20

79%
of classes

have fewer than
30 students



Just one look, that's all it took.

Many students tell us they knew on their first visit that SIUE would be their new home. At 2,660 acres, our campus is big and beautiful. How big is that, really? If you were adventurous, you could fit 3,511 football fields or 2,745,120 king-size beds on our campus!

Plan your visit at siue.edu/visit. In the meantime, explore our campus through the virtual tour at siue.edu/virtual-tour.



Virtual Tour

Esports Arena

Rec Plex

First Community Arena

MUC

The Rock

Office of Admissions

The Gardens

★ We're a STAR!

The Sustainability Tracking, Assessment and Rating System (STARS) measures universities sustainability performance. SIUE has a Silver rating. Most campus buildings are LEED® certified or pending certification by the U.S. Green Building Council.

Looking for a place to unwind and relax? **The Gardens at SIUE** is a popular place where students walk, sit, study and enjoy the beauty of nature.

High-end gaming computers, NVIDIA GeForce RTX 2070 graphics cards and Intel Core i5-8400 processors. All this and more can be found in the **Esports Arena** in Bluff Hall.

The Rock is a big chunk of the same granite used in the construction of the core campus buildings. Painting "the Rock" is a popular campus tradition.

Who's up for a game of football or Quidditch? Students compete and play for fun on the turf and grass fields at the **Rec Plex**.

The hub of student life on campus, the **Morris University Center (MUC)** has it all: bookstore, Kimmel Belonging and Engagement Hub, convenience store, bowling alley, and so much food! Campus Dining options include the classics: entrees, salad bar, pizza and burgers; along with **Chick-Fil-A®, Auntie Anne's Pretzels® and Starbucks®**.

Cheer on the Cougars! Division I Basketball, Volleyball and Wrestling compete in the **First Community Arena** at the Vadalabene Center.

SIUE students enjoy **the best of both worlds:**

Edwardsville/Glen Carbon is a vibrant, student-friendly community with amazing local coffee shops and restaurants, plenty of shopping, and fun things to do.

&

Look for the **“Welcome SIUE Students”** signs around town for special student discounts

Local fun awaits!

- | | | | |
|---|--|---|--|
| COMIC SHOPS
 | LASER TAG
 | AXE THROWING
 | TRAMPOLINE PARK
 |
| MOVIE THEATERS
 | SPAS
 | NATURE CENTERS
 | PARKS
 |
- AND MORE!



It's just 25 minutes from SIUE to St. Louis! 🏙️

- St. Louis highlights!**
- Gateway Arch National Park
 - St. Louis Zoo
 - Forest Park
 - City Museum
 - World Chess Hall of Fame
 - St. Louis Science Center
 - St. Louis Blues
 - St. Louis Cardinals

TOP 15

Safest and Affordable Communities in the nation

Edwardsville: Home of SIUE!
GoBankingRates.com

Get out there and explore!

Undergrad Majors

Arts and Sciences

Anthropology

Applied Communication Studies

- Corporate and Organizational Communication
- Interpersonal Communication
- Public Relations

Art

- Art Education*
- Art History
- Art Studio

Art and Design

- Ceramics
- Drawing
- Graphic Design
- Metalsmithing
- Painting
- Photography
- Printmaking
- Sculpture
- Textiles

Biological Sciences

- Ecology, Evolution, Conservation
- Genetics and Cellular Biology
- Integrative Biology
- Medical Science
- Medical Technology

Chemistry*

- ACS Certified in Biochemistry
- ACS Certified in Chemistry
- Biochemistry
- Bioprocess Chemistry
- Forensics Chemistry
- Medical Science
- Pharmaceutical Chemistry

Criminal Justice Studies**

Economics

English**

- Secondary English Language Arts*

Environmental Sciences**

- Environmental Health
- Environmental Management
- Environmental Toxicology

Foreign Languages and Literature

- French*
- German*
- Spanish*

Geography*

History*

- Applied Historical Methods

International Studies

- International Art, Culture and Communication
- International Development and Sustainability
- International Relations and Diplomacy

Liberal Studies

Mass Communications**

- Advertising and Strategic Media
- Journalism
- Media Production

Mathematical Studies*

- Actuarial Science
- Applied Mathematics
- Pure Mathematics
- Statistics

Music

- Jazz Performance
- Music Business
- Music Education*
- Music History/Literature
- Music Performance
- Music Theory and Composition
- Musical Theater

Philosophy

- Law

Physics

Political Science**

Social Work

Sociology**

- Diversity and Social Justice
- Employment Relations

Theater and Dance*

- Dance
- Design/Technical
- Performance

Business

Accountancy

Business Administration

- Computer Information Systems
- Cybersecurity
- Data Analytics
- Economics
- Entrepreneurship
- Finance
- General Business Administration
- Human Resource Management
- International Business
- Management
- Marketing
- Supply Chain Management

siue.edu/academics

Education, Health and Human Behavior

Early Childhood Education*

Elementary Education*

Exercise Science**

Nutrition

Psychology

Public Health

Secondary Education

- Biology*
- Chemistry*
- English*
- Geography*
- History*
- Mathematics*
- Political Science*
- Theater*

Special Education*

Speech-Language Pathology and Audiology

Engineering

Civil Engineering**

Computer Engineering

Computer Science**

Construction Management

- Land Surveying

Cybersecurity Engineering

Electrical Engineering

Industrial Engineering**

- Manufacturing Engineering

Mechanical Engineering**

Mechatronics and Robotics Engineering**

Surveying and Geomatics

Nursing

BS in Nursing, Traditional**

Accelerated BS in Nursing (2nd degree)**

† Academic program listing is current as of July 2024.

Stay on track to graduate or get ahead by taking classes during **Winter and Summer Session!**



INTEGRATIVE STUDIES

Create your own using approved curricula or choose:

- Environmental Sciences and Applied Communication Studies
- Environmental Sciences and Chemistry
- Psychology and Business Administration

PROFESSIONAL DEGREES

Dental Medicine, DMD

Pharmacy, PharmD

PRE-PROFESSIONAL ADVISEMENT

► What's this?

See [page 21](#) for details!

Pre-Chiropractic

Pre-Dental

Pre-Law

Pre-Medicine

Pre-Occupational Therapy

Pre-Optometry

Pre-Pharmacy

Pre-Physical Therapy

Pre-Physician Assistant

Pre-Podiatry

Pre-Veterinary

What's Your Major?

Not sure yet? That's okay! Your gen ed classes will introduce you to new ideas and areas of study. Plus, the Career Development Center can help you explore career options and choose a major.

All first-year students are either **directly admitted** to a major or **explore a meta major**.

Meta major? What's that?

A cluster of academic majors grouped by related courses and career fields that allows you to be intentional about exploring which major is right for you!

Meta majors help you:

- **Explore** new ideas and areas of study
- Better **understand** gen ed and major requirements
- **Connect** with like-minded students who are exploring similar degree programs and career paths

SIUE's Meta Majors

- Arts and Humanities
- Performing Arts
- Business and Technology
- Teaching and Learning
- Engineering, Math and Physics
- Social and Behavioral Sciences
- Nursing and Health Professions
- Natural Sciences and Medical Professions

Learn more!



siue.edu/meta-major

Online Bachelor's Degrees

siue.edu/online

- Accelerated RN to BS
- Accountancy
- Applied Communication Studies, Public Relations
- Business Administration
- Criminal Justice Studies
- Integrative Studies, Leadership in Organizations
- Psychology

Did you know? You can start your degree by taking general education courses online!

* You can get your teaching license

** Earn an accelerated combined degree (siue.edu/combined-degrees)

ABOUT THIS LIST

Success. It's no secret at SIUE.

College is going to be an adjustment. You're making new friends, managing class assignments, finding your way around campus and learning more about yourself. Let us help you settle in, stay on track and find success.

- Academic planning.
- Accommodations for diverse learners.
- Career services.
- Counseling support.
- Health clinic.
- Tutoring and writing support.
- A bright and cheerful place to study or catch up with friends.

You'll find it all in the **Student Success Center**.



Unique Learning Opportunities

CODES: Community-Oriented Digital Engagement Scholars

- First-generation, Black, Latinx, Pell-eligible students replace gen ed classes for impactful research projects
- Practice creative problem solving, learn new technical skills and share collaborative research with real audiences in the community

SOAR: Student Opportunities for Academic Results

- Helping first-year students navigate the college experience
- Advising, tutoring opportunities and activities that support the rise of diverse groups of students

BSE: Black Scholar Experience

- All first-year Black students join learning communities
- Extracurricular programs and support programs facilitate connections and relationship building

Summer Success Program

- Newly admitted first-year students who are first-generation, low-income and/or have a disability develop the skills over the summer needed to be successful in the fall



Our first-year students get to start their college journey a few days early at **Welcome Weekend**. You'll have fun with new friends, explore campus and spend time volunteering in the community.



The Hub provides opportunities for **belonging and engagement, leadership and service**, ways to better understand community connections and **taking action** — all while supporting you as you learn about your own identity and impact.



Cotton candy and cupcakes are good for the soul. Springfest, Homecoming and other campus celebrations offer the chance to unwind and have fun with friends.

Good boy!

Pets, hugs and some much-needed stress relief during finals week 🐶



We've got you!

An upperclass student mentor—we call them **Cougar Connectors**—can show you the ropes.

Practice and learn winning strategies and skills with **Student Success Coaches**.

Supplemental Instruction offers group study sessions for those really tough classes. Think chemistry, physics, math...

GET OUT THERE & **LEARN!**



At SIUE, what you learn in the classroom is only the beginning. The opportunities for hands-on learning are seemingly endless. You may find yourself providing free hearing screenings for immigrants and refugees, interning in a prosecutor's office, or **clearing beaches in Costa Rica for sea turtle nesting season.** 🐢

What will **YOUR SIUE experience look like?**

College of Arts and Sciences

siue.edu/arts-and-sciences

Why a liberal arts education? Because amazing things happen when you explore new ideas, experiences and people! You'll also develop lifelong critical thinking skills that will set you up for success.



"The dance program has been so influential and is helping me achieve my goals. I'm in classes that I love and learning things that I'm genuinely interested in. **It doesn't feel like I'm at school! I'm just doing what I love.** I know I'll be ready for whatever life presents."

*Jane Hart
Dance and Secondary Education
double major
Springfield, Ill.*

Beyond the Classroom

Science labs equipped with the same state-of-the-art equipment found in research labs of future employers are just the beginning of the **learning spaces available to students.** Painting and drawing studios, an archaeological excavation site (right here on campus!), a television studio and a 380-seat proscenium theater ... **the list goes on!**

Explore Your Options

- Natural Sciences
- Math
- Humanities
- Fine and Performing Arts
- Social Sciences
- Communications



School of Business

siue.edu/business

Our accounting and business programs are accredited by AACSB International. **Less than 2% of business schools worldwide** can say the same!

When it comes to business schools, **WE'RE ONE OF THE BEST!**

BEST BUSINESS SCHOOLS
18 Consecutive Years
The Princeton Review, 2024



The business world is competitive—especially when you're starting out. Our students prepare for a successful career and stand out among the competition by choosing to travel and study in China, England, Germany, Japan and more.

Why should you care?

- It guarantees you're earning a quality degree
- Potential employers know you are ready for success

Prepare for the global marketplace



- Internships and co-ops at major corporations in and around St. Louis
- Professional networking events
- Business student organizations



"The best thing about my major is the relevant business experience I'm gaining. I work in the Office of Student Financial Aid where I'm learning to work in the public sector and gaining business skills. And we're working with Salesforce—software used by a lot of companies—in my computer information systems classes."

*Ashton Carter
Business Administration-Marketing major
Chicago*

School of **Education, Health and Human Behavior**

siue.edu/education



380+
regional district/school
and community agency
partners

“I love the professors in my department and the personalized support they provide. This program is providing me with a well-rounded education that is helping me prepare to make an impact on the lives of those who have communication difficulties.”

*Tyler Brennan
Speech-Language Pathology and Audiology major
Riverton, Ill.*



You can make a profound difference in the lives of children, families and individuals in your community. Become a highly qualified **health professional or pre-K-12 classroom teacher** through the exploration of healthy living, optimal instruction and learning, and organizational improvement.



Our clinics and labs will challenge you to apply what you're learning in a real-life setting.

- Virtual classroom simulations
- Performance fitness testing
- Studying the effects of physical activity on mental health
- Diabetes and atherosclerosis research

School of **Engineering**

siue.edu/engineering

Everywhere you look, almost everything you see has been created or made better by engineers, computer scientists or construction managers. At SIUE, you'll join risk takers, innovators, adventurers and collaborators working together on complex and rewarding projects that **make the world a better place.**



Actually, it is rocket science.

This is where the magic happens.



The Engineering Building is 200,000 square feet of state-of-the-art design team workspaces, classrooms and 55 engineering laboratories where our innovative students design the future.



Bring your competitive spirit!

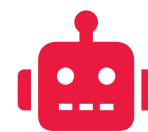
Our student design teams consistently place well in regional and national competitions.



Concrete canoes and bowling balls



Mini Baja, Formula and Solar Cars



Robotics



Steel bridges

“I love the balance between hardware and software, and this major allows me to explore my interest in both careers. I’m getting real-world experience through internships, working in the digital systems and design lab, and collaborating with engineering professors on research projects. **I can’t explain enough how much I love and enjoy my major!**”

*Ximena Gonzalez Alfaro
Computer Engineering major, Mathematics minor
Edwardsville*

School of **Nursing**

siue.edu/nursing



“There is an abundance of support in the School of Nursing.

We are all helping each other get our nursing degree and ultimately pass the NCLEX certification exam. From the moment you're admitted, you feel like you're not alone in this journey.”

*Kaelyn Cupil
Nursing major
Chicago*

Our reputation precedes us

Our nursing graduates are heavily recruited by surrounding hospitals and healthcare centers who know all about our commitment to **outstanding patient care.**



Your calling to care for others is a perfect prerequisite for a nursing career. Our program centers around providing compassionate, high-quality patient care that meets the needs of a diverse and ever-changing population.



Clinical experiences are available in urban, rural, acute care and critical access settings throughout the metro St. Louis area and through global service trips.

School of **Dental Medicine**



We keep our classes small, so you'll get to know your classmates and professors. It's the perfect environment to prepare to **be one of the best dentists in the country.**

A+ Well Done!

100% of the Class of 2024 passed the Integrated National Board Dental Exams **on the first try!**



Students Serving the Community

- Give Kids a Smile Day
- Veterans Dental Care Day
- Special Olympics/Special Smiles
- National Children's Dental Health Month

siue.edu/dental

School of **Pharmacy**

siue.edu/pharmacy



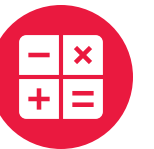
Become a vital member of the healthcare team, committed to improving patient care by **helping people live stronger, healthier lives.**

Trauma-informed care is part of the pharmacy curriculum in order to prepare students to **better care for patients** grappling with pain and suffering.

We're #1!

Our graduates' NAPLEX exam pass rates continue to rank **#1 in Illinois** and have exceeded the state and national average every year since 2014. This mega test is required in order to be a licensed pharmacist.

Do the Math



2 + 4 = PharmD*

2-year pre-pharmacy program
4-year Doctor of Pharmacy program

3 + 4 = DMD*

3-year Bachelor of Science
4-year Doctor of Dental Medicine program

*Students may also apply to pharmacy or dental school after earning a 4-year undergraduate degree

Learning at SIUE 🎓 ...what's it all about anyway?

🐸 **Frogs. Memory Patterns. Cultural Bias. Microbiomes.**

Lucky for you, faculty bring the cool and interesting research they're doing into classroom learning. Our URCA program allows undergrads to work with faculty on projects that other schools save for grad students.

siue.edu/urca

Is your goal to become a doctor? A lawyer? A physical therapist?

Our **Pre-Professional Advising program** allows you to work with your advisor to create a schedule that includes the classes you'll need to meet the requirements for professional school. See the list of programs on **page 9**.

We know it's a little early, but let's talk about graduate school.

SIUE has 100+ graduate degree programs. Some programs even allow you to earn credit for grad school while taking undergrad classes.

➡ Get the details at siue.edu/combined-degrees.

Are you ready to be inspired?



📍 **Where will you go?**

Pack your bags! ✈️

Make the world your classroom and study abroad for a few weeks or a full semester. The courses you take there earn credit for you here. It's more affordable than you think.

siue.edu/study-abroad

Honors at SIUE A unique SIUE experience!

- Curriculum and community that mimics a small college experience with the benefits and resources of a large university
- Honors students dare to think creatively, ask difficult questions and empower others. Honors students want to change the world.

siue.edu/honors



Lovejoy Library is your source for books, digital collections, online research tool four years of tuition, mandatory fees, housing and meal plan bike desks and a meditation room.

siue.edu/library

Check out the Meridian Scholarship 🎓

SIUE's most prestigious academic award

- Covers four years of tuition, mandatory fees, housing and meal plan
- If you have a 3.5+ GPA, you're eligible!

siue.edu/meridian

Look!

You'll **SEE
all kinds of
FACES on
our campus!**

An SIUE student designed and installed this work of art as part of our unique Sculpture on Campus program. At SIUE, your learning won't be limited to four classroom walls or lecture halls. Be ready to explore, investigate, create, research, collaborate, discuss—**whatever it takes to learn and grow.** 🌱

Bride of the City

"This work addresses themes of agency, vulnerability and violence; of particular concern are issues of violence against women and objectification of the female body. Every choice in creating this piece was made with the intention to juxtapose and unify the ideas of outward vulnerability and inward strength."

Sarah Bohn, BFA '18

Challenge yourself. Be active. Have some **FUN**.

Be a regular at the Student Fitness Center. **Your membership is covered** by your student fees, so why not? 🍌

Bouldering cave and climbing gym, hardwood multi-purpose courts, state-of-the-art strength and cardio equipment, free-weight room, indoor pool, group fitness and cycling classes, indoor track and Freshens Energy Zone®



Free rentals! 🚲 🏸 🏀 🏈 🎾 🏓

You can use our bikes, boxing gloves, heart rate monitors, jump ropes, footballs, basketballs, volleyballs, tennis rackets...

but bring your own roller skates!



SIUE @SIUE · 3h

Calling all #runners, #walkers and #bikers. It's easy to access the Madison County Transit 85-mile trail system from the many trails on campus.

Rollerblading, sand volleyball, disc golf—
we are here for it!



50+ CLUB SPORTS

Some of our most popular:

- 🏏 Quidditch
- 🎮 Esports
- 🏈 Football
- 🏀 Basketball
- 🎯 Dodgeball
- 🏒 Ice Hockey
- 🎭 Cheer and Dance
- 🎣 Bass Fishing

LIVE

where you LEARN

siue.edu/housing



Live smart! 🧐

Students who live on campus:

- Have higher GPAs
- Earn more credit hours per semester
- Find their place and feel accepted by other housing residents



YES! 🍀

- You can request a roommate!
- We have safe spaces for ALL gender identities!
- Accessible living units are available!
- We'll help you move in! ▶

Living on campus means you're steps away from coffee, your classes, the library, campus events, coffee, recreation, dining services... did we mention coffee? ☕



What's an LLC? 🏠

It's a **Living Learning Community**. Live with students who like what you like!

First-Year LLCs:

- Business
- Education
- Engineering and Technology
- Health Professionals
- Honors
- Nursing
- Science and Math
- Social and Human Behavior



First-year Living Options 🏠

BLUFF HALL,
WOODLAND HALL,
PRAIRIE HALL



Shared Bedroom or Deluxe Private Bedroom (available on a limited basis)



Deluxe Suite Bedroom (available on a limited basis)

Residency Requirement

All first-year, first-time students who graduated high school within the last 12 months are required to live on campus. Students who meet one of the approved exemption reasons, like commuting from a parent or guardian's home address within 60 miles from campus, need to **submit an exemption request**. For more information about the Residency Requirement and the exemption process, please visit our website. 😊



Going Places

Your time at SIUE will go way too fast. We can help you get a head start on what comes next, so you're well-prepared for a **successful, rewarding career.**

Don't own any professional clothes? We've got you covered! You can visit the **(FREE!)** Cougar Career Closet before that big interview. 🧥👔

Last year, students earned more than **\$2.2 million** at internships and co-ops.
Average hourly wage = \$20.13

Career Preparation

The SIUE Career Development Center offers career exploration and counseling, internship and co-op programs, graduate school planning, resume critiques, career fairs, and more. Nearly **2,000 employers** recruited SIUE students and posted more than **12,800 jobs** through the Career Development Center last year.

siue.edu/cdc

\$64,000

Average starting salary for SIUE graduates

That's more on average than other Illinois universities.

(payscale.com)

Look at Them Now

SIUE alumni are **making the world a better place** in their own unique ways. We'd love to brag on everyone, but there's just not enough room! 🌟



Major League Baseball

Spencer Patton
BS Integrative Studies '21
Pitcher



Certified Clothier/Fitter

Darryl Tyler
BS Business Administration '03
Owner, Tailored Gents at Savile Row



Mobile Retail

Jeffrey Harrison
BS Business Administration '12
Co-founder and President, Rovertown



Healthcare Leader

Damon Harbison
MBA '04
President, SSM Health St. Mary's Hospital and Good Samaritan Hospital



Leveraging Technology

Tabitha Turman
BS in Accountancy '98
Founder and CEO, Integrated Finance and Accounting Solutions



Microsoft

Angela Heise
BS Computer Science '96
Corporate Vice President, Worldwide Public Sector



Celebrity Health and Fitness Expert

Joey Thurman
BS Liberal Studies '09
Health, fitness, nutrition expert and bestselling author



Country Music

Brett Sheroky
BS Speech Language Pathology and Audiology '06
MS Speech Language Pathology '08
Country Singer and Songwriter

Our alumni live and work in all 50 states and 88 countries 🌍



Fitness and Fashion

Aftan Noon
BA Art '13
Fitness and Modeling Coach, FMG Pro Fitness Champion



Brain Function and Child Development

Chris Bosworth
BS Psychology '02
Pediatric Neuropsychologist, St. Louis Children's Hospital



Supporting the Visually Impaired

Jason Frazier
BS Mass Communications '11
CEO, MindsEye



Empowering Black Girls

Cynthia Chapple
MS Chemistry '15
Founding Director, Black Girls Do STEM



Feeding the World (While Reducing Energy Use)

Chico Weber
BS Manufacturing Engineering '13
Inventor of GrowMotion robotic grow light



International COVID-19 Task Force

Christina Moore
BS Nursing '14
Task Force Member



Women's Fighter of the Year

Jessica "CasKILLA" McCaskill
BA Mass Communications '06
One of three female welterweight champions

125,000
ALUMNI
and counting

Paying for College

siue.edu/paying-for-college

How much does it cost to attend SIUE?

Accessibility and affordability are very important to us. We hold the same accreditation as many of the nation's top schools, but **we charge significantly less for tuition.***

*Undergraduate, two semesters, 15 credit hours each. Prices reflect academic year 2024-2025 tuition rate. Room and board reflects costs in a shared room in a first-year residence hall and meal plan A.

**Some degree programs have course-specific fees.

**Opt out by providing proof of health insurance coverage.

	Base Tuition*	\$9,576
+	Mandatory Fees*	\$3,346.50
+	Student Health Insurance Fee**	\$2,583
+	Room & Board*	\$10,951
=	Total	\$26,456.50



Textbook Rental Included in mandatory fees. **Save thousands of dollars each year!**

Financial Aid? Tell Me More!

Important: File the FAFSA as soon as you can beginning in October at studentaid.gov



More than 40% of our first-year students who file the FAFSA receive enough aid (Federal Pell Grants + Illinois MAP Grants + SIUE Aid) to **cover 100% of their tuition and mandatory fee charges.**

There are many factors that will impact your financial aid package. See what costs might look like for you siue.edu/paying-for-college/estimator.

What is financial aid?

- **Grants** don't need to be paid back and are awarded based on **financial need**.
- **Scholarships** don't have to be paid back and are awarded on **academic merit**.
- **Loans** have to be **paid back with interest**.
- **Work study** provides on-campus work experience and a paycheck to use toward tuition or living expenses.
- Learn more at siue.edu/financial-aid.

First-Year and Transfer Student Scholarships

Scholarship	Requirements	Amount	Duration
Cougar Pride	3.0 GPA Transfer students: 24 transferable credit hours in addition to GPA	Up to \$16,000 for first-year students Up to \$6,000 for transfer students	Over 4 years Over 2 years
Johnetta Haley <small>Designed to support enrollment of students who are underrepresented in their anticipated field of study.</small>	3.0 GPA Transfer students: 24 transferable credit hours in addition to GPA	Up to \$8,000 for first-year students Up to \$4,000 for transfer students	Over 4 years Over 2 years
Meridian <small>First-Year Students Only Fall entry only</small>	3.5 GPA	Full tuition, fees, room and board	Over 4 years
Phi Theta Kappa <small>Transfer Students Only</small>	Phi Theta Kappa Member 24 transferable credit hours	\$2,000	One-time award

Scholarships listed are awarded as funding allows.

Hey! Do you live in Illinois or Greater St. Louis?



We'll cover tuition, mandatory fees and course-specific fees after utilizing all federal/state/institutional financial aid, including merit-based scholarships, as funding is available for eligible students.*

- **SIUE Commitment:** Illinois residents
- **SIUE Gateway Opportunity:** Greater St. Louis residents

*Family income less than \$113,575 and assets less than \$50,000 based on submitted FAFSA

Fine print details & additional scholarship opportunities



siue.edu/financial-aid/types-of-aid

You have **Questions.** We have **Answers.**

1. What do I need to apply?



- Completed application: siue.edu/apply
- Official high school transcript
- \$40 application fee
- Transfer students: official transcript from each college attended*

*Official high school transcript required if you have less than 30 credit hours

**ACT/SAT
scores are
NOT REQUIRED!**



2. When is the application deadline?



First-year students

- Application opens **August 1**
- For scholarship consideration **November 15**
- Application deadline **May 1**

Transfer students

- Application deadline **4 weeks before start of the semester**

3. What if I already have some college credits?



- SIUE accepts AP/IB, transferable college courses and some CLEP credit
- Test score is required for AP/IB credit
- You can take proficiency exams

4. What about transfer students?



If you have:

- 30+ semester hours (post high school) from an accredited school and 2.0 GPA (minimum), you'll be admitted!
- Less than 30+ semester hours (post high school), an official high school transcript is required.

siue.edu/transfer

► **Ready to take the next step?**
siue.edu/apply

Connect with us!

- 📷 @siuedwardsville
- ✕ @siue
- 📺 @siue
- 📘 @siuedwardsville

See for yourself! ..

We offer a variety of visit options because you just have to see this place!

siue.edu/visit



Check us out!

Visit options include:

Preview SIUE, Explore Days, daily visits and more!



siue.edu/visit



Ready to get started?

Apply TODAY!



siue.edu/apply



 @siuedwardsville

 @siuedwardsville

 @siue

Office of Admissions

Campus Box 1600
Edwardsville, IL 62026-1600
618-650-3705 or 800-447-SIUE
admissions@siue.edu

siue.edu/admissions

SIUE is proud to support responsible
use of forest resources.

Printed by authority of the State of Illinois 7/24, 18,000, 25070001

Check out some interesting statistics based on the selection of 100% recycled fiber materials used in this publication.



Number of
trees saved
109



Wastewater
reduction:
8,700 gallons



Total energy
saved:
46 million BTUs



Solid waste
reduction:
370 lbs.



Greenhouse gases
prevented:
47,000 lbs.