

ANNUAL REPORT ON GIVING | 2019-2020



SOUTHERN ILLINOIS UNIVERSITY
EDWARDSVILLE
FOUNDATION



Dear Alumni and Friends,

Thanks to you, our donors, we exceeded our annual goal for fundraising, even during the stressful and unprecedented time of COVID-19. I want to personally thank each of you for your support! It means more now than ever to have generous donors who believe that SIUE changed their lives for the better.

Our Advancement team did a remarkable job this year raising contributions received of \$4.8 million, which is robust considering the challenges we faced with COVID-19. The Foundation worked with Campbell & Company and a Campaign Readiness Task Force comprised of donors, alumni, staff and faculty to assess readiness for a capital campaign. The results were not as favorable as we had hoped, but we decided to embark on a planning year during this fiscal year. We ended our contract with Campbell & Company, but will continue to identify and cultivate donors for the emerging projects that will benefit SIUE students, faculty and staff. Our team also attended various trainings to learn more about how to fundraise in our new normal.

Fundraising Results

- Our fiscal year 2020 total net contributions received were \$4.8 million, exceeding our pre-COVID-19 budget of \$4.15 million.
- We raised \$62,000 for the SIUE Student Emergency Assistance Fund.
- Sixteen new scholarships and nine new endowment funds were created.
- Our endowment fund as of June 30, 2020, was \$26.3 million. Over the last 10 years, the endowment fund has returned 6.5%, annualized.
- Our non-endowment fund as of June 30, 2020, was \$14.5 million. The non-endowment fund 10-year annualized return is 3.5%.

As we look toward the future, we need all of our more than 115,000 alumni and friends to donate. ***Every gift counts, no matter the size.*** If you received support while you were a student here, please consider giving to scholarships. If you spent long hours in the library, consider a gift to Lovejoy. We have over 1,500 funds, so I know there is something for everyone's interest.

We need the entire SIUE community of alumni and friends to be involved. Thanks for your investment in the future of SIUE! Go Cougars!

Best,

A handwritten signature in cursive script that reads "Rachel C. Stack". The signature is written in black ink on a white background.

Rachel C. Stack
Vice Chancellor for Advancement
CEO of the SIUE Foundation

IT'S A GREAT DAY TO BE A COUGAR!

Last year,
SIUE administered more than

\$160 million
in student financial aid
with an average award of \$14,099

260,000

student service hours
completed last year



More than

115,000
degrees awarded at
SIUE

78%
Retention rate
Freshman to sophomore year

ST. LOUIS
**#1 city for
launching
a career**

LinkedIn 2020

HIGHER EDUCATION EXCELLENCE IN DIVERSITY

ONE OF 33 INSTITUTIONS TO HAVE EARNED THIS DISTINCTION FOR AT LEAST SEVEN CONSECUTIVE YEARS.

INSIGHT Into Diversity

TOP **5%**

IN THE NATION

**Best Value
Nursing Schools**

College Factual

**2020 Safest
College Campuses**

#9

IN THE NATION

YourLocalSecurity

#2

IN ILLINOIS

#13

IN THE NATION

**Safest College
Towns**

2020 Safewise Report



**School of Pharmacy
Class of 2019**

- Highest Board Pass Rate in Illinois and Missouri
- Ranked in the Top 20 nationally among 135 pharmacy schools

#1

IN ILLINOIS

TOP **2%**

IN THE NATION

**BUSINESS ADMINISTRATION PROGRAM
Best Value for the Money**

College Factual



SIUE Meridian Society

As an auxiliary organization of the SIUE Foundation, the Meridian Society promotes women's leadership and invests in SIUE community-based projects. Each year, the Meridian Society provides financial awards to fund outstanding community outreach programs and projects, which are supported through SIUE departments and services.

The COVID-19 pandemic forced the 2020 Meridian Awards Committee to quickly convert the selection process to an electronic format. "Even though we were in the middle of a pandemic, we were thrilled to be able to award a total of \$21,845 to six programs," said Marian Smithson, Meridian Awards chair.

2020 Meridian Award Recipients

- Antimicrobial Awareness Alliance
 - School of Pharmacy
 - SIHF Healthcare
- Establishing a Schoolyard Garden at Liberty Middle School
 - Department of English Language and Literature
 - Goshen Market Foundation
- Living History Days: A Chautauqua Re-Enactment
 - Department of History
 - Madison County Historical Society
- Native American Studies and Sustainability: Audio for the Geodesic Dome at SIUE
 - Department of Anthropology
 - Center for Spirituality and Sustainability at SIUE
- The Children's Quilting Project: Healing Through Art
 - SIUE East Saint Louis Project Success
 - Greater East Saint Louis Community Fund
- "Stop the Cycle": A Vaping Awareness and Educational Program for Madison and St. Clair County Schools
 - School of Pharmacy
 - Chestnut Health Systems, SIUE Health Service, American Pharmacists Association—Academy of Student Pharmacist Operation Heart

THE
MERIDIAN
SOCIETY
PRESENTS THE

GOLDEN MERIDIAN AWARDS

+ HOME FOR THE HOLIDAYS

The Meridian Society hosted its inaugural Golden Meridian Awards + Home for the Holidays virtual event on Nov. 4, 2020, via Zoom. Attendees learned about this year's Meridian Award recipients and their projects while enjoying inspiring holiday tips from Meridian Society members.

View the event at
siue.edu/meridian-society/events

Since 2004, the Meridian Society has distributed \$350,956 to 133 award winners.



2019 Giving Tuesday

Our 2019 Giving Tuesday campaign was the most successful to date! We received a remarkable \$136,270 in gifts and pledges from our friends in more than 30 states and five countries. A huge thank you goes to our generous donors for showing their Cougar pride!

**Mark your calendar,
Giving Tuesday is December 1!**



2020 Giving Tuesday Now and SIUE Student Emergency Assistance Fund

The COVID-19 pandemic caused many unexpected financial challenges for our students during the spring 2020 semester. In response, we launched the SIUE Student Emergency Assistance Fund campaign and participated in Giving Tuesday Now, an added global day of giving in response to the pandemic. Through the generosity of our SIUE family, we raised more than \$60,000 to support students in need.



SIUE Scholars for Racial and Social Justice

As part of SIUE's commitment to end racism and promote social justice, the University is proud to announce the creation of the Racial and Social Justice Scholarship. Beginning in fall 2021, SIUE will select one or more scholarship recipients annually based on a demonstrated commitment to anti-racism and a desire to deepen and enrich their dedication to this cause at SIUE and beyond. Help us reach our initial goal of \$25,000 to ensure Scholars for Racial and Social Justice will be recognized for years to come! Visit siuegive.com to make your gift.

SIUE Engagement Center Success

The SIUE Engagement Center raises money for the SIUE Foundation through the efforts of student employees who make stewardship and fundraising calls to alumni, friends, faculty, staff, students and parents. Despite a shortened fundraising year due to the COVID-19 pandemic, the Engagement Center collected 1,751 pledges, totaling \$151,747. Senior business marketing major Tessa Ackerland made Engagement Center history by becoming its highest fundraiser ever when she surpassed the \$100,000 milestone.



Dear Cougar Fans,

As we traverse through unprecedented times in intercollegiate athletics, your unwavering support of our student-athletes has been a beacon of light, and your contributions serve as a testament to your belief in our programs and people.

While our teams continue to prepare, the Department of Intercollegiate Athletics remains diligent in our efforts to enhance the student-athlete experience in both their educational and championship pursuits. We have, however, had to explore and implement alternative fundraising initiatives due to the COVID-19 pandemic.

We completed the \$28 for 28 campaign, celebrating the 28th consecutive semester our student-athletes have earned a combined GPA of 3.0 or higher. In addition, we relaunched the Cougar Athletic Excellence Fund and introduced Victory SIUE, a special gift program for individual sports. We greatly appreciate your generosity in supporting these endeavors, which have helped us navigate through this year and begin to build for tomorrow.

On behalf of SIUE Athletics, thank you for your dedication and commitment. As our teams return to action, we eagerly await the day we can cheer them on together!

Go Cougars!
Tim Hall
Director of Athletics



First Community Arena at the Vadalabene Center Unveiled

SIUE unveiled the First Community Arena at the Vadalabene Center in August 2019 after partnering with First Community Credit Union for the largest corporate naming rights arrangement at SIUE—\$2.3 million over the next 10 years.

“This is a wonderful example of emerging community relationships,” said SIUE Chancellor Randy Pembroke. “We thank First Community for their generosity, as well as their enthusiasm for higher education in general and SIUE specifically.”

Cougar Student-Athletes Extend Academic Streak to 14 Years

For the 28th consecutive semester, SIUE student-athletes earned a combined GPA above 3.0, extending their impressive streak to 14 years. The Cougars once again cruised past the 3.0 threshold and boasted a 3.494 GPA, the highest since moving to NCAA Division I status. In total, 12 teams earned a team GPA above 3.0, nine of which were above a 3.5.

Harry Gallatin Golf Practice Facility



Construction was completed on the Harry Gallatin Golf Practice Facility in November 2019.



Gift of Racehorse Earnings Honor Inaugural Basketball Coach Harry Gallatin

SIUE Athletics Hall of Famer Mike Moore, a member of the first Cougar basketball team, and his wife, Maureen, donated \$6,000 to SIUE Athletics from the winnings of their racehorse, Tiz Gallatin. The Moores selected their filly's name in honor of SIUE's inaugural basketball coach and legendary NBA Hall of Famer Harry Gallatin.



Former Cougar Athletics Standout Returns to his Alma Mater

Former standout track and field member Marcus Evans '10, returned to his alma mater as head coach for SIUE's track and field and cross country programs. Evans has spent the past nine years on the coaching staff at Lipscomb University.

For more information

Contact Tad Middleton, SIUE Athletics director of development, at 618-444-9688 or tmiddaa@siue.edu.



Scholarships Reflect Donor's Dedication and Values

Jackie Johnsen Hammer, whose father played an important role in establishing SIUE, has strengthened her ties to the University by creating two scholarships.

Hammer's history is tightly intertwined in the origins of SIUE. Her father, Norman Johnsen, was an urban renewal planner who helped develop the plans for the University prior to its construction. He later became a faculty member at SIUE, teaching earth sciences, geography and planning.

In honor of her late husband, Hammer created the Jeffrey S. Hammer, MD, Memorial Scholarship. Jeffrey was a prominent psychiatrist in the region and a leader in healthcare informatics who took photographs at local events to financially support himself through medical school. The scholarship in his honor is available for undergraduate or graduate students majoring in art and design with a focus in photography/digital arts. The first scholarship recipient was selected in 2019.

"Jeff believed education is paramount," Hammer said. "With my ties to the University since I was a child and having the assets to give, what better thing to do than to help educate someone who cannot afford it otherwise?"

A second scholarship, the Jackie Johnsen Hammer and Jeffrey Hammer Memorial Scholarship, will be created through a planned gift to support graduate students majoring in healthcare informatics.

Scholarship Recipients



"During times like this with a tragic pandemic making its way around the world, one thing that has stood its place is art. Art can heal wounds not on the outside and bring hope to the world that medicine and physical objects will never heal. Thank you for allowing me to continue to live out my dream and bring joy to others, like you did with me."

— Thomas Harrison
Junior, Theater and Dance
Dave Johnson & Michael Newton Scholarship



"My parents immigrated to this country running away from a corrupt government, and all they ever wanted was to provide my brother and me the opportunity to achieve anything we set our minds to. I am proud to say that I am the first one in my family to graduate from a university in the United States and the first to attend a master's program in this country."

— Cristal Campocasso
Master's Candidate, Social Work
Regulus & Gilmore Social Work Student Award



Student Scholarships

The College of Arts and Sciences (CAS) offers classes to every undergraduate student at SIUE as part of its general education curriculum, as well as specialized courses in the arts, humanities, natural sciences and social sciences. From the study of the atom and the simplest forms of life, to the most complex issues affecting the economy and politics of our society, CAS offers more than 50 undergraduate and graduate programs ranging from the specialized to the interdisciplinary.

As CAS looks to the future, it's incumbent upon us to meet the needs of our students and align our goals with changing regional demographics.

For CAS to maintain or increase our current enrollment, we need to find new ways of educating a student body increasingly composed of first-generation college students. Expanded resources will be necessary for us to effectively engage with and provide support to these students, who tend to have fewer financial resources.

During our virtual 2020 Honors Day program, CAS celebrated a record 289 students who received 335 scholarships and awards. These scholarships not only reward student achievement, but also bridge the gap for students with financial need. Over the next five years, CAS seeks to raise \$3 million to increase scholarship opportunities across all disciplines to meet the changing needs of our students.



For more information

Contact Kyle Moore, College of Arts and Sciences director of development, at 618-650-5048 or kymoore@siue.edu.



School of Business Launches Online Impact Campaign

The COVID-19 pandemic has affected all facets of life, few more dramatically than higher education. Along with the rest of the campus community, the School of Business pivoted to 100% online education last March in a two-week time period. While our experience in offering online graduate business courses made this transition easier, such a rapid shift created barriers in offering some of the extras that help us deliver the educational experiences that set us apart.

To help alleviate these shortcomings, we would like to create a robust offering of online support tools to prepare our students for success in the job market. We believe these platforms, including peer-to-peer tutoring, presentation skills feedback and virtual career events, are needed to keep the School at the forefront of business education.

Our goal is to raise \$80,000 in the next six months to invest in these dynamic programs. Please consider supporting our Online Impact Campaign with a gift today.

For more information

Contact Sara Colvin, School of Business director of development, at 618-650-2317 or scolvin@siue.edu.

Scholarship Recipient

“

Receiving this scholarship is such an honor, as I've put so much work into finishing school while running my business. It will help relieve some financial stress during my final semester.

”

— Abigail Schuneman

Senior, BSBA major with a specialization in marketing
Grady Family Foundation Entrepreneurship Scholarship





Construction Begins on the New Advanced Care Clinic in Alton

The School of Dental Medicine began construction in April 2020 on its new Advanced Care Clinic (ACC) on the Alton campus. The state-of-the-art clinical facility is anticipated to be ready for patient care by the start of the fall 2021 semester.

The ACC will provide accommodations for the School to facilitate treatment for its most vulnerable patient population: children who require general anesthesia for the completion of care. The facility also will expand and enhance the School's postdoctoral specialty programs, including a new graduate endodontic program.

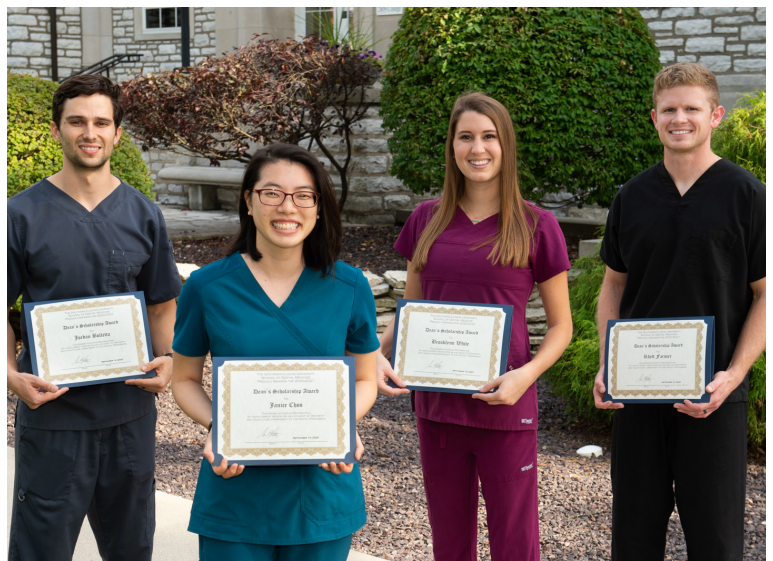
While much of the necessary funding to construct the \$11 million project has been secured, we are seeking additional support to help equip the new facility and reach the total funding required for completion. Naming opportunities are available for alumni, faculty and friends interested in sponsoring individual patient operatories, as well as the two operating rooms in the medical operating suite.

Support for Dental Student Scholarship Grows

The hallmark of the School of Dental Medicine's scholarship program is the Dean's Scholarship Award. In August 2020, the School named four new Dean's Scholars and was able to award 11 additional scholarships, most through recently established named endowments.

Our scholarship program is intended to reward academic merit, assist with financial need and increase student diversity. Consideration for awards also includes experiences and challenges along the path to the Doctor of Dental Medicine degree.

Due to the COVID-19 pandemic, we were unable to host our annual Dean's Scholarship Gala. Proceeds from the event traditionally provide a huge lift for the School's scholarship program. As a result, we are seeking your support to help ensure the School remains affordable and accessible to talented and motivated students. Your generosity will allow us to continue providing significant scholarship assistance for deserving dental students.



For more information

Contact Stephen Schaus, School of Dental Medicine director of development, at 618-474-7271 or sschaus@siue.edu.



Former SIU President Establishes Endowment for Education Students

Former Southern Illinois University President Glenn Poshard, PhD, and his wife, Jo, have donated \$100,000 to establish the Glenn and Jo Poshard Scholarship Endowment in the School of Education, Health and Human Behavior. The scholarship will be dedicated to community college transfer students majoring in education or teaching with demonstrated financial need and with a minimum GPA of 3.0.

“It was a great privilege for Jo and me to serve the SIU System and see SIUE’s success in the higher education community of Illinois,” Glenn Poshard said. “We hope to continue our efforts to provide additional scholarship assistance to SIUE students in the future.”

Fundraising Initiatives



Student Conferences

Whether held in person or virtually, professional conferences provide our students with engaging opportunities to present their own research while also connecting with students and faculty from across the country.

Clinics and Labs

Our clinics and labs provide students with hands-on learning experiences while offering valuable services for local residents. Your donation will provide ongoing support for our students while funding scholarships for clients in need.

Dismantling Racism through Education, Advocacy and Mobilization (DREAM) Collective

Created by faculty activists, the DREAM Collective is committed to naming, addressing and dismantling racism in our region by creating effective programming and fostering cultural competence through education, advocacy and mobilization.

Scholarship Recipient



“This award has influenced me academically by helping me decide that I would like to pursue my master’s degree. Since Alice Prince was able to go back to school as a single parent, I am confident that I will be able to do so as well.”

— Lyric Barnes, BS Public Health '20
Alice Prince Award

For more information

Contact Divah Griffin, School of Education, Health and Human Behavior director of development, at 618-650-5043 or digriff@siue.edu.

Support from our Industry Partners

Thank you to our generous industry partners for enhancing the educational experience of our students for years to come.

Enterprise Holdings Foundation: \$1.5 million gift to renovate the School of Engineering's atrium with state-of-the-art technology including a multi-screen video wall and collaborative seating area

Basler Electric Company: \$100,000 donation of cutting-edge electrical power system equipment to enhance the learning experience in the power systems lab

Ameren Illinois: \$50,000 gift to support improvements in the power systems lab that will enhance power engineering research efforts and training for students



Fowler Student Design Center Grand Opening

The School of Engineering celebrated the grand opening of the Fowler Student Design Center, a 14,000-square-foot state-of-the-art addition to the Engineering Building, in October 2019. The project was made possible by a \$1.25 million gift from the Fowler Family, combined with contributions from other major donors including Ed Grady and Ralph Korte.

Fundraising Initiatives

Diversity and Inclusion Fund: \$100,000 Goal

This multi-year initiative is designed to promote inclusion, recruitment, retention and scholarship of minority engineering students through engagement activities both on and off campus.

Auditorium Renovation: \$750,000 Goal

The School of Engineering's largest lecture auditorium is in need of technological renovations to create a facility where instruction and industry experience can be shared effectively. We are looking to partner with private donors or industry to upgrade and name this space.

Scholarship Opportunities: \$100,000 Goal

We are seeking to double the number of scholarships awarded to our students annually by securing additional funds from individual donors and businesses.

For more information

Contact Lisa Smith, School of Engineering director of development, at 618-650-5020 or lsmitag@siue.edu.

Scholarship Recipient



"With the monetary and emotional aid this scholarship has given me, I am reassured of my hard work and have a revitalized enthusiasm to continue my education with the purpose of not just obtaining a degree, but also pursuing a career in the computer science discipline."

— Emily Schafer, Senior, Computer Science
2020 William H. Gentry
Computer Science Scholarship

SIUE Nursing Legends and Legacies Circle Celebrates Donors



The new SIUE Nursing Legends and Legacies Circle celebrates the lasting partnership formed with donors who have included a bequest or planned gift commitment in their estate plans for the benefit of the School of Nursing.

“I was fortunate to receive financial assistance while pursuing my nursing degree at SIUE. We hope our gift will help nursing students achieve their career goals, as well as inspire others who are in a financial position to ‘pay it forward,’” said Sandra Spilotro, BSN ’69. Spilotro and her husband, Peter, made the School’s first planned gift commitment in 2014.

Please consider joining the SIUE Nursing Legends and Legacies Circle by making your own gift through a bequest, life insurance, charitable annuity, charitable remainder trust or other vehicle.



Nursing Gems Scholarship Recipient Pays It Forward

As a BSN student in 2013, Mat Hettiger was the recipient of the Nursing Gems of 2009 Scholarship. This award was created by three male nursing alumni from the class of 2009 who wanted to support the success of male students in the BSN program. Hettiger, now working in a cardiac ICU on the front lines of the COVID-19 pandemic, is paying forward the generosity he received by supporting the scholarship’s 2021 award.

Scholarship Recipient



“I’m humbled and thankful that you consider me worthy of such an investment. This scholarship will allow me to focus my full efforts on my education and save me the time and difficulty of managing my nursing school and Army commitments along with a part-time job. I will use your financial support to help me on my journey of becoming the best Army nurse I can be.”

— Moneer Damra, Senior, Nursing
Cecil Howard Griffin, Florence Bowmaster Griffin and
Dr. Anne G. Perry Scholarship Endowment

Fundraising Initiatives

General Scholarship Fund

We are seeking to double the number of scholarships available to our students through new individually named and funded scholarships or gifts to the General Scholarship Fund.

General Development Fund

Gifts of all sizes advance important student and faculty development programs that help to prepare highly qualified nurses to meet pressing patient-care needs.

Simulation Learning Center for the Health Sciences Enhancement Fund

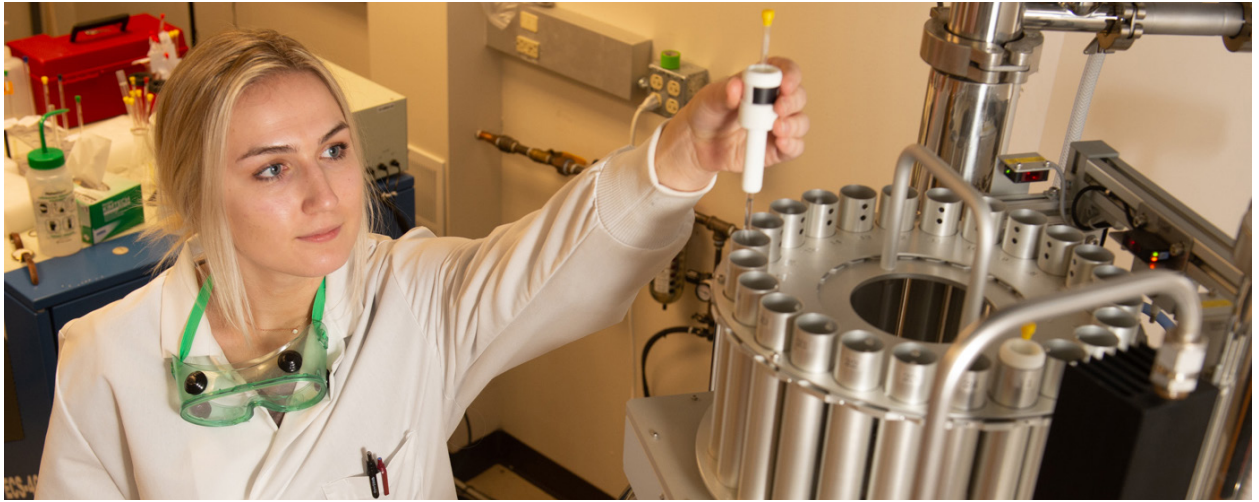
Support the development of cutting-edge clinical simulation equipment and facilities that will drive the future of nursing education, research and professional development.

For more information

Contact Patti McDonald, School of Nursing senior director of development, at 618-650-3906 or pmcdona@siue.edu.

School of Pharmacy Increases Financial Support for Students

The School of Pharmacy awarded \$29,000 in scholarships to students during the 2019-2020 academic year, a \$5,000 increase over the previous year. Additionally, the Pharmacy Advisory Board Scholarship Endowment Fund was created with the goal of raising \$25,000 over the next five years.



Fundraising Initiatives

Student Annual and Endowed Scholarship Awards

We are seeking to double the number and total amount of scholarships awarded to talented and deserving pharmacy students each year.

School of Pharmacy General Development Needs

These gifts support faculty and student professional development, participation in state and national conferences, and alumni and community relations efforts.

Global Education Experiences

Donations support the formation of global partnerships, along with providing international education experiences that impact our students' multicultural awareness, understanding and competency while providing healthcare for diverse communities in the U.S. and abroad.

Stamper-Carr PharmD Endowed Scholarship

We continue to seek alumni support for this fund, which was created by alumni to thank and honor Connie Stamper-Carr, retired director of student services, for her contributions to their personal and professional success.

Dean's Leadership Society

These gifts support emerging strategic priorities such as clinical training center upgrades and master's in pharmaceutical sciences program enhancements.

SIUE Health Sciences Building

The construction of SIUE's new Health Science Building is an exciting opportunity to shape the creation of labs and learning environments which will transform health science education in southern Illinois and beyond.

Scholarship Recipient



"This award means so much to me. As a pharmacy student and a future pharmacist, it is important to be knowledgeable about cultural differences and their effects on attitudes and behaviors. We need to be able to gain understanding of patients, their health beliefs and culture, which has been shown to improve patient satisfaction, medication adherence and good health outcomes."

— Abidemi Ajayi, MBA '19,
Third Professional Year, PharmD
Walgreens Diversity & Inclusion Excellence Scholarship

For more information

Contact Shane Taylor, School of Pharmacy director of development, at 618-650-5154 or staylaa@siue.edu.

GRADUATE SCHOOL

The Graduate School supports high-quality graduate education, fosters intellectual development and facilitates excellence in research and creative activities. Your financial contributions provide valuable support to graduate students and faculty across the University.

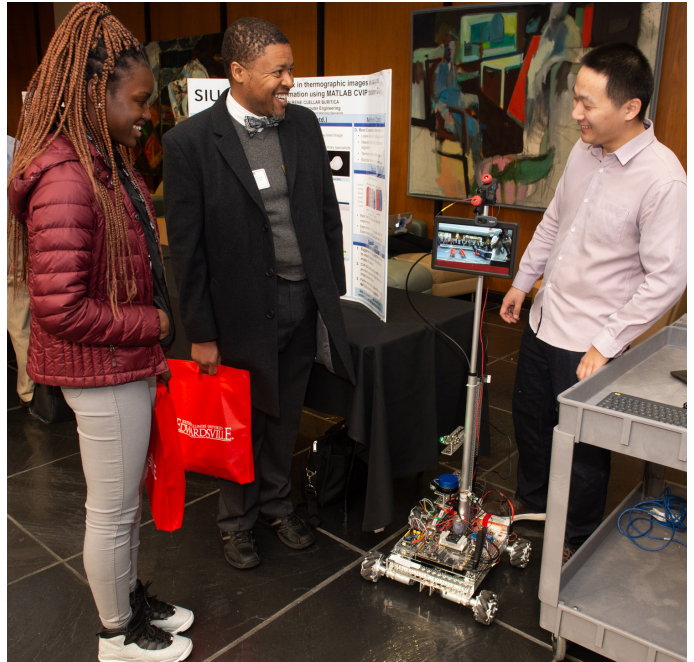
Fundraising Initiatives

Scholarship and Research Endowment: \$100,000 Goal

This fund will create a permanent and lasting source of support for our graduate students and will allow us to continue to attract and retain the finest graduate students. Funding will be provided to outstanding students from across the University annually and will reward them for their academic excellence.

Rosemarie Archangel, Ellen Sappington, and Stephen L. and Julia Y. Hansen Innovation and Excellence In Graduate Education Endowment: \$500,000 Goal

This program will support innovation and improvements in existing and new graduate programs and graduate faculty development related to the strengthening of graduate studies.



Scholarship Recipients



“Receiving this grant will be beneficial to me as I move forward with my research. The support of student research projects can lead to insightful discoveries. Thank you for investing in my research and supporting the future generation of scientists.”

— **Krista Russell, MS Environmental Sciences '20**
Research Grants for Graduate Students



“This grant funding will be critical in my research. Thank you so much! I will be conducting research that explores scope of practice for an art therapist. This research may help better define art therapy as a field, which may have implications for attaining state-issued art therapy licenses.”

— **Eva Sedjo, Master's Candidate, Art Therapy Counseling**
Research Grants for Graduate Students

For more information

Contact Jerry Weinberg, PhD, associate provost for research and dean of the Graduate School, at 618-650-3010 or jweinbe@siue.edu.

LIBRARY AND INFORMATION SERVICES

Dr. Gordon Bush Exhibit on Display in Lovejoy Library



We invite you to visit Lovejoy Library to view photographs depicting the long and illustrious political, military and civic career of SIUE Distinguished Alumnus and former East St. Louis Mayor Gordon D. Bush, '70, '71. SIUE is grateful for the scholarships Dr. Bush and his wife Brenda have provided for our students.

"When you think about the career of Gordon D. Bush, you can see SIUE's mission of training individuals to shape a changing world," said SIUE Chancellor Randy Pembroke. "Thank you, Dr. Bush, for all you have done for this community and for this University."



Fundraising Initiative

Library and Information Services provides materials, instruction and support to more than 400,000 visitors annually. With more than 160,000 titles published each year and changes in technology, keeping up with the needs of SIUE's students and faculty remains a challenge.

Collection Development Fund

Existing funds allow the Library to purchase less than 5% of the new titles published each year. Gifts to the Collection Development Fund will help us create significant and permanent solutions for increasing our collections, including the creation and support of endowed collections and the purchase of necessary materials to meet the needs of increasingly dynamic and technologically sophisticated students and faculty.

For more information

Contact Shane Taylor, Library and Information Services director of development, at 618-650-2714 or staylaa@siue.edu.



New Sculpture Unveiled in Hairpin

A new sculpture debuted on campus in December 2019, bringing SIUE pride to the Hairpin—along with new photo opportunities. The seven-foot-tall, seven-foot-wide "e" sculpture was conceived by Heather Kniffel, BFA '95, MFA '13, and produced by SIUE alumnus Dave Thomas, BA Art and Design '72, owner of Dave Thomas Design in Edwardsville. The statue cost approximately \$20,000 to design, fabricate and install, and was paid for by anonymous donors to the SIUE Foundation.



Dear Fellow SIUE Alumni and Friends,

The COVID-19 pandemic has created unprecedented challenges for nearly every facet of our country, and higher education is no exception. Despite these challenges, the SIUE Foundation has continued its important work of supporting the University community.

I want to thank the Foundation Board members for all they continue to do to support and maintain our University. We could not do this without you! I would also like to congratulate the Advancement team for their remarkable work engaging and helping to facilitate donations to the University. We are excited to welcome four new directors of development to support this valuable work:

- Divah Griffin, School of Education, Health and Human Behavior
- Tad Middleton, Intercollegiate Athletics
- Lisa Smith, School of Engineering
- Shane Taylor, School of Pharmacy and Library Information Services

I want to thank you, our donors, for your generous contributions to the University. I encourage you to continue giving back. Many families are struggling right now, which impacts our students in serious ways. We need to ensure SIUE remains a place where students receive a world class education by providing scholarships, fellowships, financial literacy skills and access to the everyday essentials of life. Many of us struggled through college, but none of us can say it was through a pandemic. Please continue to be as generous as possible.

Very Sincerely Yours,
David Hopkins '82, '89
President, SIUE Foundation Board of Directors

SIUE Foundation Board of Directors

Sherry Baker
Benjamin F. Edwards & Co.
Secretary

Michael D. Butler
Merle E. Butler & Patricia A.
Butler Charitable Trust
Member

J. Kevin Dorsey
SIU Interim President
Ex-Officio Member

Elizabeth Frattura
Morgan Stanley
Vice President

Bev George
Bev George & Associates
Board Chair

Andrew S. Glenn
Moneta Group
Member

Edward C. Grady
Electro Scientific Inc. Industries
Member

Brian Henry
Express Scripts
Member

Jennifer Hertel
Belleville Memorial Hospital
Member

Edward Hightower
SIU Board of Trustees
Ex-Officio Member

Willis Hill
Caleres
Member

David E. Hopkins
Town and Country Bank
President

Edward J. Huneke, Jr.
SIUE Athletics (Retired)
Member

Mary Kane
Stifel Nicolaus & Co. Inc.
(Retired)
Member

Kevin Kaufhold
Kaufhold & Associates PC
Member

Keith J. Kehrer
Bryan Cave Leighton Paisner LLP
Member

Larry R. Lexow
Lexow Financial Group
Member

Daniel F. Mahony
SIU President
Ex-Officio Member

Eileen Martindale
SIUE Alumni Association
Ex-Officio Member

Steven M. McRae
Great River Management
(Retired)
Member

Kevin Nicol
Nicol Enterprises
Member

John E. Oeltjen
Mueller Prost LC
Senior Director

Chad Opel
Visionary Wealth Advisors
Member

Randall Pembrook
SIUE Chancellor
Ex-Officio Member

Lendell A. Phelps, Jr.
AT&T (Retired)
Member

Charles Reifsteck
AT&T Global Services
Member

Neal W. Roller
School of Dental Medicine
(Emeritus Professor)
Member

Kevin Rust
Thrivent Financial for Lutherans
(Retired)
Treasurer

John F. Schmidt
Columbia Quarry Co.
(Retired)
Honorary Lifetime

Mark Shashek
Cassens Transport Co.
Member

Rachel C. Stack
SIUE Foundation CEO
Ex-Officio Member

Dennis Terry
First Mid-Illinois Bank & Trust
Member

Michael Wenzel
Wenzel & Assoc. Ltd.
Member

Janice Wolters
Busey Bank
Member

Total Giving

Growth is only possible through the generosity of our donors. In fiscal year 2020 (July 1, 2019-June 30, 2020) our donors continued to give generously.

In FY20, our donors gave to the following areas:

TYPES OF CASH CONTRIBUTIONS	FY20 TOTALS
Unrestricted	\$ 9,923
Student Assistance	\$ 355,507
Endowment	\$ 1,258,423
Academic Units & Other Programs	\$ 3,063,495
Gifts-In-Kind	\$ 66,542
Total Contributions Received	\$ 4,753,890

Overall Income Summary

In addition to contributions, the SIUE Foundation also receives investment income; non-gift income consisting primarily of receipts from fundraising events, sales and fees; and payments from SIUE to support Foundation and Alumni operations.

TYPES OF INCOME	FY20 TOTALS
Cash Contributions	\$ 4,753,890
Net Investment Income	\$ 272,125
Non-gift Income	\$ 323,083
Payments from Related Organizations	\$ 190,000
Total Income Received	\$ 5,539,098

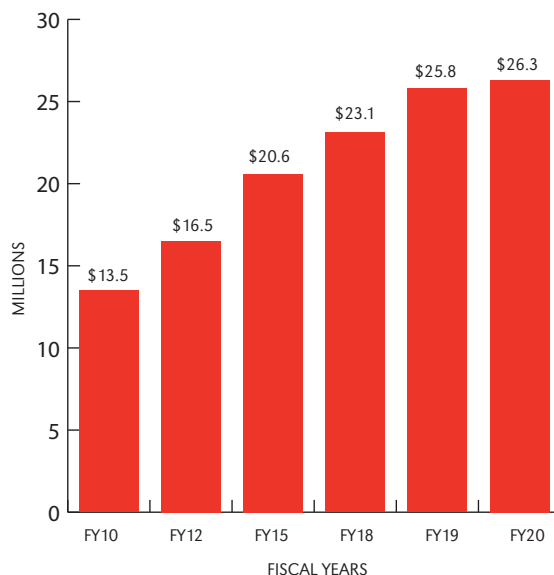
All items are on a cash basis except for Investment Income and Gifts-In-Kind.

An annual investment management fee of 1.25% of the market value of the endowment pool is assessed on the average balance and includes the investment management and advisor fees charged by the investment managers and advisor. The remainder of the management fee is used to support the general charitable purposes of the Foundation and for purposes of defraying a portion of operating expenses.



Endowment Profile

For the 10-year period starting with a beginning balance of \$13,456,371 in fiscal year 2010 to the ending balance of \$26,335,758 in fiscal year 2020, the value of the SIUE Foundation’s endowments grew 96%.



Total Asset Profile

Total assets for the SIUE Foundation, including investments, real property and other assets, increased \$18,736,275 for the 10-year period starting with a beginning balance of \$32,086,391 in fiscal year 2010 to the ending balance of \$50,822,666 in fiscal year 2020, representing total growth of 61%.





New Endowment Funds Established in Fiscal Year 2020

DEPARTMENT OF CONSTRUCTION FACULTY ADVANCEMENT ENDOWMENT

Honors Department of Construction faculty for excellence in scholarship and in recruiting and retaining exceptional faculty members

DR. MARY MULCAHY SIUE SCHOOL OF NURSING FACULTY DEVELOPMENT ENDOWMENT

Funding to host nationally renowned experts in nursing education and convening an annual conference or workshop for nursing faculty

GLENN AND JO POSHARD SCHOLARSHIP ENDOWMENT

Provides scholarship support for School of Education, Health and Human Behavior students

JAMES AND MARILYN BENJAMIN CAMPUS BEAUTIFICATION ENDOWMENT

Provides development funds for the preservation and enhancement of the natural beauty of the SIUE campus

LOUISE CORLEW '75 SIUE BSN MEMORIAL SCHOLARSHIP ENDOWMENT

Provides a memorial scholarship for a student in the accelerated nursing program in honor of Louise Corlew, a 1975 SIUE Bachelor of Science in Nursing graduate

MICHAEL, AL, RICH, LEN, FRED, DAVID BERNARD SCHOLARSHIP ENDOWMENT

Provides scholarship support to SIUE students majoring in any area within the College of Arts and Sciences

SANDRA JEANNE MACDONALD CROME SCHOLARSHIP ENDOWMENT

Provides scholarship support for SIUE students majoring in nursing

SIUE SCHOOL OF PHARMACY ADVISORY BOARD SCHOLARSHIP ENDOWMENT

Recognizes and provides financial assistance to outstanding Doctor of Pharmacy students enrolled in the School of Pharmacy



Establishing an Endowment

An endowment fund is a gift that lasts in perpetuity and provides support continually to the University in the area(s) of interest to the donor. Endowed funds may support student scholarships, faculty, the general needs of SIUE or any School, College, unit or program within the University. Donors may fully fund an endowment with a one-time lump-sum gift, over a five-year period, or through a bequest or other deferred gift. The minimum gift to establish an endowment is \$25,000. In addition to cash, endowed funds can be established through any gift vehicle recognized by the SIUE Foundation, including gifts of securities, property, planned gifts, or pooled gifts from a group of friends or family. The SIUE Foundation works with donors to develop guidelines for how their endowed funds are to be used, ensuring donor intent is honored and SIUE policies are followed.

For information on establishing an endowed fund

Contact any College or School development officer or the SIUE Foundation at 618-650-2345.

Ways to Give

Outright Gifts

Gifts of cash, securities, real property or personal property may be unrestricted or restricted to a specific school, department or program. Gifts can also be given to support new or existing scholarships, grants, student or faculty awards, special projects or endowments.

Planned Gifts

Planned gifts come in many forms including bequests, life income gifts and other options such as trusts and life insurance.

Gifts-in-Kind

Gifts-in-kind are non-cash donations of materials or other goods that support and serve the mission of the University. Such gifts may include equipment, software, printed materials, professional services and employee expertise. Gifts-in-kind are a valued way of supporting the University and may be tax-deductible according to IRS regulations.

SOUTHERN ILLINOIS UNIVERSITY
EDWARDSVILLE
F O U N D A T I O N